

Maple Sugar

Wade Allen

TablEdited by mmuusicaall, Richard Van Patten

4

7

10

13

16

19

22

Po

H

1-2

Sl

Po

Po

Po

Po

Po

25 Po Sl Po Po

28 Po Po Po

32 Po Po Po Po Po

36 Po H Sl H

39 Po H

43 Po Po Po

47 Po Po Po

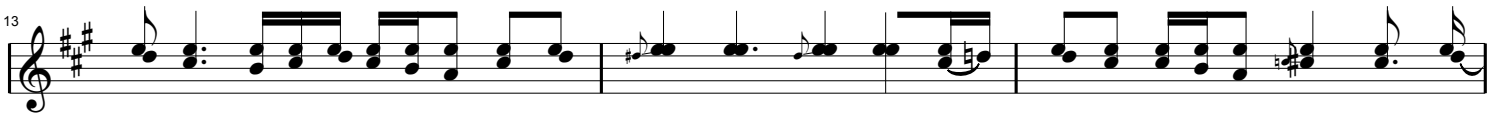
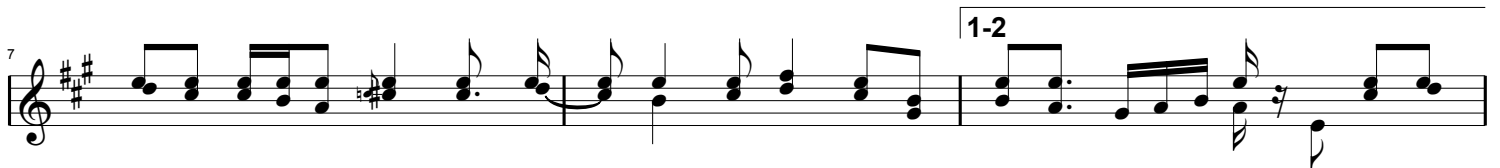
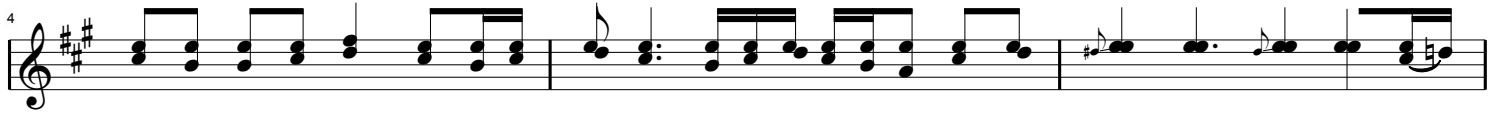
3.

50 0-4-5

Maple Sugar

Wade Allen

TablEdited by mmuussiiccaall, Richard Van Patten



25

28

31

34

37

40

43

46

49

Maple Sugar

Wade Allen

TablEdited by mmuussiiccaall, Richard Van Patten

The image displays a guitar tablature for the piece "Maple Sugar" by Wade Allen. The music is written for a four-string guitar in 4/4 time. The tablature is organized into systems, with measures 1 through 22 shown. Each system consists of a staff with four lines representing the strings (E, A, D, G from top to bottom). Fret numbers are indicated by digits 0-4 on the lines. Various musical notations are used throughout, including "Po" (palm mute), "3HV4" (three hammer-ons/vibrato), "2LV2" (two lift vibrato), "3H" (triple hammer-on), "1-2" (slide), and "H" (hammer-on). The piece begins with a key signature of one sharp (F#) and a 4/4 time signature. The first system (measures 1-3) features a series of chords and single notes, with a key signature change to one sharp (F#) indicated by a sharp sign on the first line of the E string. The second system (measures 4-6) continues with similar patterns, including a "3HV4" notation. The third system (measures 7-9) includes a "Po" notation and a "1-2" slide. The fourth system (measures 10-12) features a "3HV4" notation and a "Po" notation. The fifth system (measures 13-15) includes a "3HV4" notation and a "Po" notation. The sixth system (measures 16-18) includes a "3H" notation and a "Po" notation. The seventh system (measures 19-21) includes a "Po" notation and a "3H" notation. The eighth system (measures 22) includes a "Po" notation and a "3H" notation.

25

0. 1-0 1 3H 4 | 1L 1 1. 2-1 3H 1 0 | 1-2 2. 1-0 1-2 1

28

1 1. 2-1 3H 2 3H | 0. 3H. 2-1 3H 0 2 | 1 1. 2-1 3H 1 0 | 1-2 2. 1-0 1-2 1

32

1 1. 2-1 1-1 1-1 3H 2 3H | 0 0. 1-0 1-2 3 3H 4 4. | 0 0 1-0 3 2 1 | 2L 2 2. 3-2 0 3 2

36

2 1 2 3 3-2 1 2 | 3 2. 1 2 3 2 1 0 2 3 | 0 0 3H 4 4. 3H 4 4 2

39

3 2 2 1 0 2L 2 2. 3 2 1 2 3 2 3H | 1 0. 3H 0 1 0 3H 4 | 1 1. 2-1 1 0 | 1 1. 2-1 1 0

43

1-2 2. 1-0 1 2 1 | 1 1. 2-1 3H 2 3H | 0. 3H. 2 1 3H 0 2 | 1 1. 2-1 1 3H

47

1-2 2. 1-0 1 2 1 | 1 1. 2-1 3H 2 3H | 0 0. 1-0 0 0 0 3 2 3 | 0 0 0 0 0 0

3.

50

0. 1-2-3 0-2-3 0