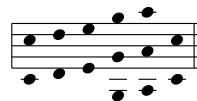


# Scales and Chords

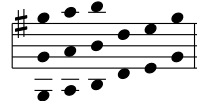
scale	sharps / flats	common chords				more chords					
		1	4	5	7	2	3	4	5	6	7
F	Bb	F	Bb	C (7)		Gm (7)	Am	Bb	C (7)	Dm	C/E
C		C	F	G (7)		Dm (7)	Em	F	G (7)	Am	G/B
Cmix	Bb	C			Bb	Dm (7)	C/E	F	Gm (7)	Am	Bb
G	F#	G	C	D (7)		Am (7)	Bm	C	D (7)	Em	D/F#
Gmix		G			F	Am (7)	G/B	C	Dm (7)	Em	F
Gdor	Bb	Gm			F	Am (7)	Bb	C	Dm (7)	C/E	F
D	F# C#	D	G	A (7)		Em (7)	F#m	G	A (7)	Bm	A/C#
Dmix	F#	D			C	Em (7)	D/F#	G	Am (7)	Bm	C
Ddor		Dm			C	Em (7)	F	G	Am (7)	G/B	C
Dm	Bb	Dm			C	C/E (+D)	F	Gm	Am (7)	Bb	C
A	F# C# G#	A	D	E (7)		Bm (7)	C#m	D	E (7)	F#m	E/G#
Amix	F# C#	A			G	Bm (7)	A/C#	D	Em (7)	F#m	G
Ador	F#	Am			G	Bm (7)	C	D	Em (7)	D/F#	G
Am		Am			G	G/B (+A)	C	Dm	Em (7)	F	G
Edor	F# C#	Em			D	F#m (7)	G	A	Bm (7)	A/C#	D
Em	F#	Em			D	D/F# (+E)	G	Am	Bm (7)	C	D
Bm	F# C#	Bm			A	A/C# (+B)	D	Em	F#m (7)	G	A

# Pentatonic Scales

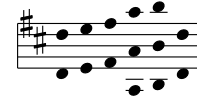
C 12356



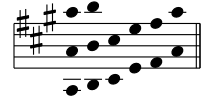
G 12356



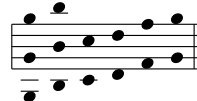
D 12356



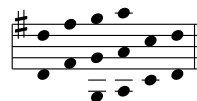
A 12356



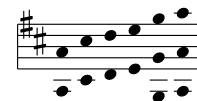
Gmix 13457



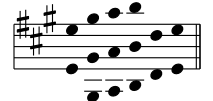
Dmix 13457



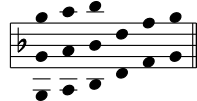
Amix 13457



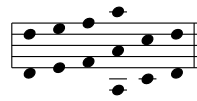
Emix 13457



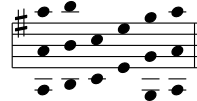
Gdor 12357



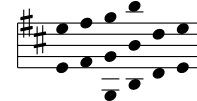
Ddor 12357



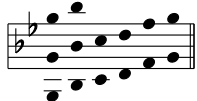
Ador 12357



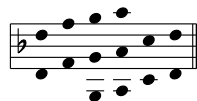
Edor 12357



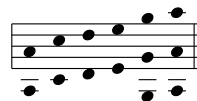
Gm 13457



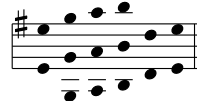
Dm 13457



Am 13457



Em 13457



Bm 13457

