

Midnight Flyer (from the Eagles recording)

based on the playing of Bernie Leadon
G Tuning (high A): aDGBD

Intro
D

The Intro section consists of three staves of guitar tablature. The first staff is in 4/4 time and features a D chord. The second and third staves continue the melodic line with various fret numbers and techniques like hammer-ons (h) and slides (s). The third staff includes a chromatic descending line with a grace note (c) and a slide (s).

(Chorus Back-up)

The Chorus Back-up section consists of three staves of guitar tablature. The first staff is in G chord and includes a double bar line. The second and third staves feature various chords (D, G, Bm, Em, A) and techniques like palm muting (p), slides (s), and hammer-ons (h). The third staff includes a chromatic descending line with a grace note (c) and a slide (s).

(Verse Back-up)

D G D

s

G A D

s s s

G D Bm G

s s

A D

Repeat measures 17 thru 36

Banjo Break

p

D G D G

p h h

A D G

s p s

D D7 Em F#m G Ab A

s

(Chorus Back-up)

D G

p s h

D G

p s h

D G

s s h

D Bm Em A

p p

D Bm Em A C

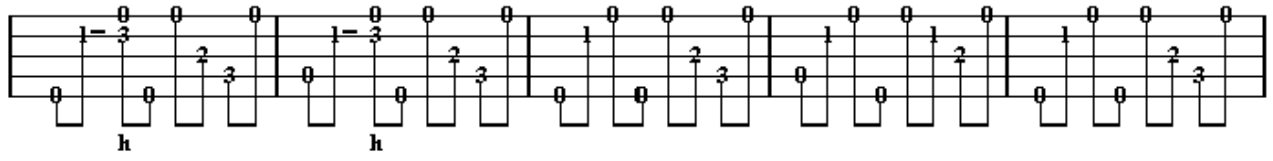
p p

(Closing Measures)

G D

h h h

h h h h h h h



Repeat and fade.

