

Everyday- G - CH Fletcher.tef

TablEdited by Terry Fletcher

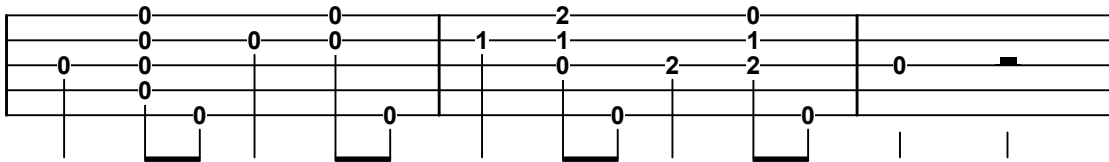
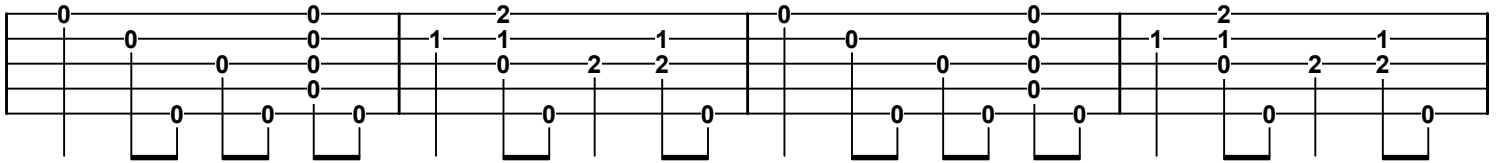
The first system of guitar tablature consists of two staves. The top staff is in 4/4 time, with a 4 over the first measure. The notes are: 0, 0, 0, 0 | 0, 0, 0, 0 | 0, 0, 0, 0 | 0, 0, 0, 0 | 2, 2, 3, 2 | 2, 1, 1, 0. A 'Po' (pull-off) is indicated above the 3 in the fifth measure. The bottom staff shows the corresponding fretting: 0, 0, 0, 0 | 0, 0, 0, 0 | 0, 0, 0, 0 | 0, 0, 0, 0 | 0, 0, 0, 0 | 0, 0, 0, 0.

The second system of guitar tablature consists of two staves. The top staff notes are: 0, 0, 0, 0 | 1, 1, 2, 1 | 0, 0, 0, 0 | 1, 1, 1, 1 | 2, 2, 2, 2. The bottom staff fretting is: 0, 0, 0, 0 | 0, 0, 2, 2 | 0, 0, 0, 0 | 0, 0, 0, 0 | 0, 0, 2, 2 | 0, 0, 0, 0.

The third system of guitar tablature consists of two staves. The top staff notes are: 0, 0, 0, 0 | 1, 1, 2, 1 | 0, 2, 2, 2 | 0, 2, 2, 2 | 0, 2, 2, 2. 'H' (hammer-on) is indicated above the 2 in the fifth and seventh measures. The bottom staff fretting is: 0, 0, 0, 0 | 0, 0, 2, 2 | 0, 1, 1, 1 | 0, 1, 1, 1 | 0, 1, 1, 1 | 0, 0, 0, 0.

The fourth system of guitar tablature consists of two staves. The top staff notes are: 2, 3, 3, 3 | 2, 3, 3, 3 | 3, 3, 3, 3 | 3, 3, 3, 3 | 3, 3, 3, 3. 'H' (hammer-on) is indicated above the 2 in the first and second measures. The bottom staff fretting is: 0, 0, 0, 0 | 0, 0, 0, 0 | 2, 2, 2, 2 | 3, 3, 3, 3 | 3, 3, 3, 3 | 0, 0, 0, 0.

The fifth system of guitar tablature consists of two staves. The top staff notes are: 4, 4, 4, 4 | 3, 3, 3, 3 | 0, 0, 0, 0 | 2, 2, 3, 2 | 2, 1, 1, 0. A 'Po' (pull-off) is indicated above the 3 in the fifth measure. The bottom staff fretting is: 0, 0, 0, 0 | 0, 0, 0, 0 | 0, 0, 0, 0 | 0, 0, 0, 0 | 0, 0, 0, 0 | 0, 0, 0, 0.



I believe Buddy Holly sang it in D. Not sure
Verses are measures 3 - 10;
Chorus is 11-18;
Final Verse ending are measures 19-27
Sorry, I'm new to TABLEDIT