

Banjo sawmill tuning -- as alternate capo 2 and Guitar play am, dm

Adieu False Heart

TablEdited by Randall Rode

Musical notation for the first system, featuring a 4/4 time signature and fret numbers (0, 2, 3) with 'H' and 'Po' markings above the staff.

Guitar -- Capo on 3rd Fret

Chord diagram for the first system, showing fret numbers (0, 2) across the strings.

Adiue -- false - heart

Musical notation for the second system, featuring a 5/4 time signature and fret numbers (0, 1, 2, 3, 4, 5) with 'H' markings above the staff.

Guitar chord diagrams for the second system, including Am (x00222) and Dm (x02202).

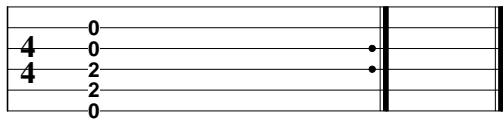
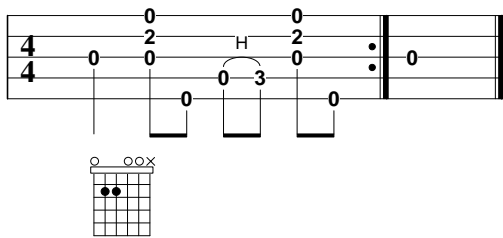
Chord diagram for the second system, showing fret numbers (0, 1, 2, 4, 5) across the strings.

- world go with you

Musical notation for the third system, featuring a 5/4 time signature and fret numbers (0, 1, 2, 3, 4, 5) with 'Po' and 'H' markings above the staff.

Guitar chord diagram for the third system, including Am (x00222).

Chord diagram for the third system, showing fret numbers (0, 1, 2, 4, 5) across the strings.



-- Lead in --

Adieu false heart, since we must part
 May the joys of the world go with you
 I've loved you long with a faithful heart
 but I never anymore can a-b'lieve you

I've seen the time I'd-a married you
 And been your constant lover
 But now I gladly give you up
 For one whose heart's more truer.

-- Instrumental break ----

My mind is like the constant sun
 From the east to the west it ranges
 Yours is like unto the moon
 It's every month it changes

When I lay down to take my rest
 No scornful one to wake me
 I'll go straight ways unto my grave
 Just as fast as time can take me