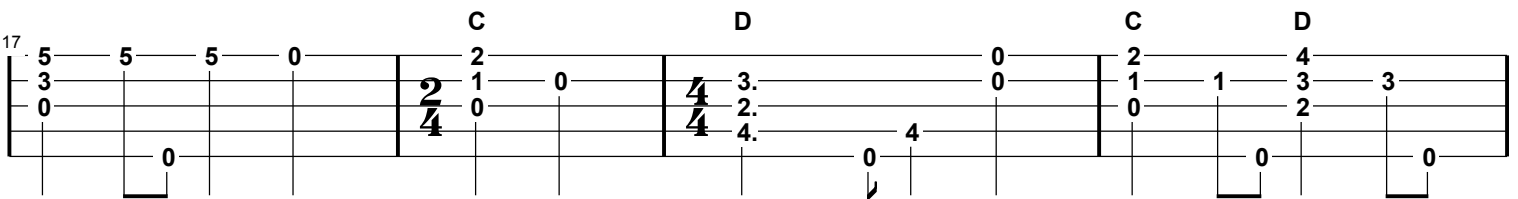
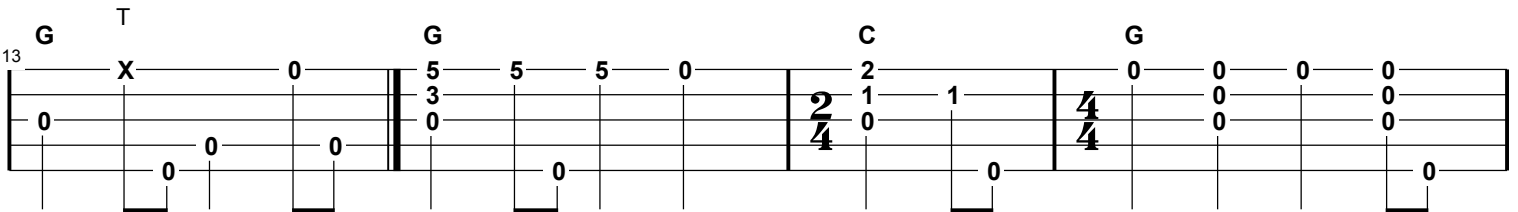
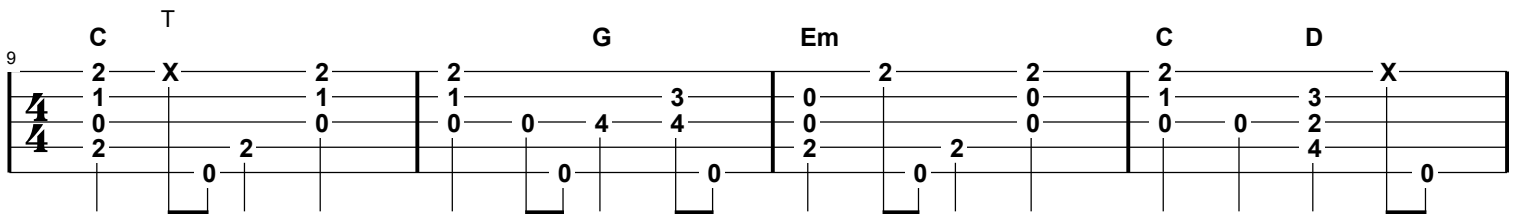
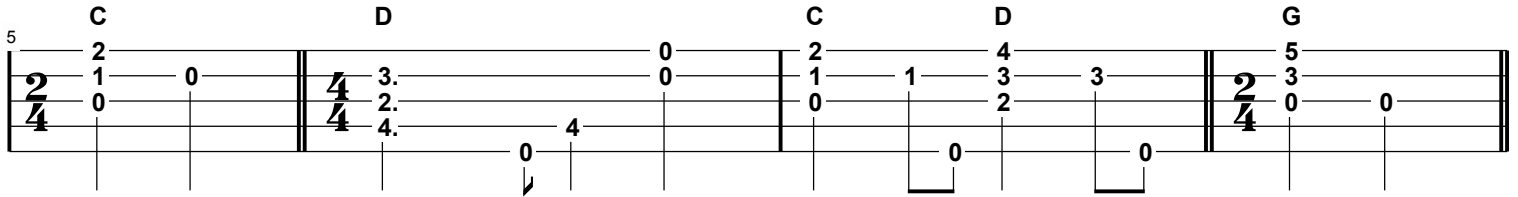
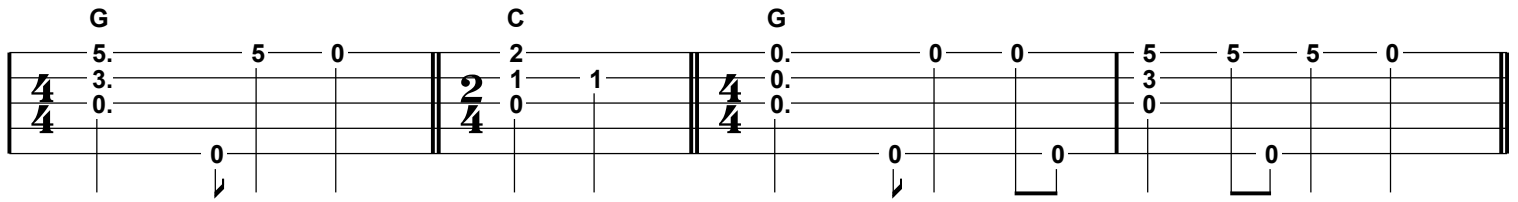


A Remembrance

composed by Jack Beuthin

Key of G
clawhammer style



21

G **C** **G** **Em**

25

C **D** **T** **G**

A video of me playing this rendition is posted on my YouTube channel: <https://youtu.be/BnGPozNNt7I>

"T" indicates skipping over the strings sand tapping the head rther than playing a note/

Chords/chord changes above the tab lines (boldfaced letters) are those used for playing backup guitar, or chording on the banjo.